

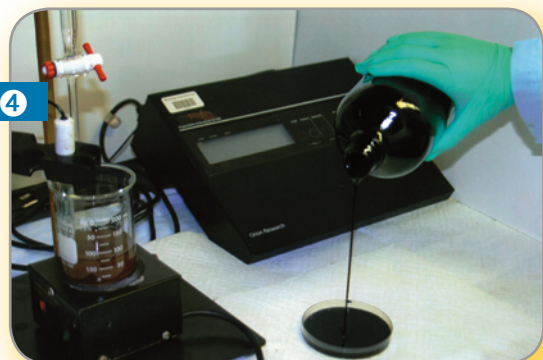


*Southern Growth Policies Board presents
Southern Energy: Abundant, Affordable and American –
2009 Innovator Award Winner*

Sustainable Energy Research Center

Mississippi State University

Objective: To develop renewable transportation fuels to meet the nation's goal of replacing 20 percent of the fuel supply with renewable energy.



The Sustainable Energy Research Center (SERC) was established in 2006 at Mississippi State University (MSU) through funding from the U.S. Department of Energy. The mission of SERC is to develop a renewable energy industry in Mississippi and the Southeast. SERC was formed to create an infrastructure for coordinated interdisciplinary collaboration at MSU in the development of environmentally and economically sustainable and renewable energy sources specific to the Southeastern United States. Cross-disciplinary teams work on research projects to ensure that the sustainable energy sources, technologies, and policies developed are not only theoretically promising, but offer practical, workable implications for the future of bioenergy. SERC serves as a conduit for the development of integrated research and educational programs for the state of Mississippi. The Center is also a catalyst for forging partnerships between academia, business and government.

1. Dr. Brian Baldwin and student Brett Rushing checking the quality of a new variety of switchgrass.
2. Drs. Rafael Hernandez and Todd French, Assistant Professors in Chemical Engineering at MSU, inspecting fermentor for biocrude production.
3. Extracting biocrude from biocrude-producing microorganisms.
4. Analyzing the quality of bio-oil.