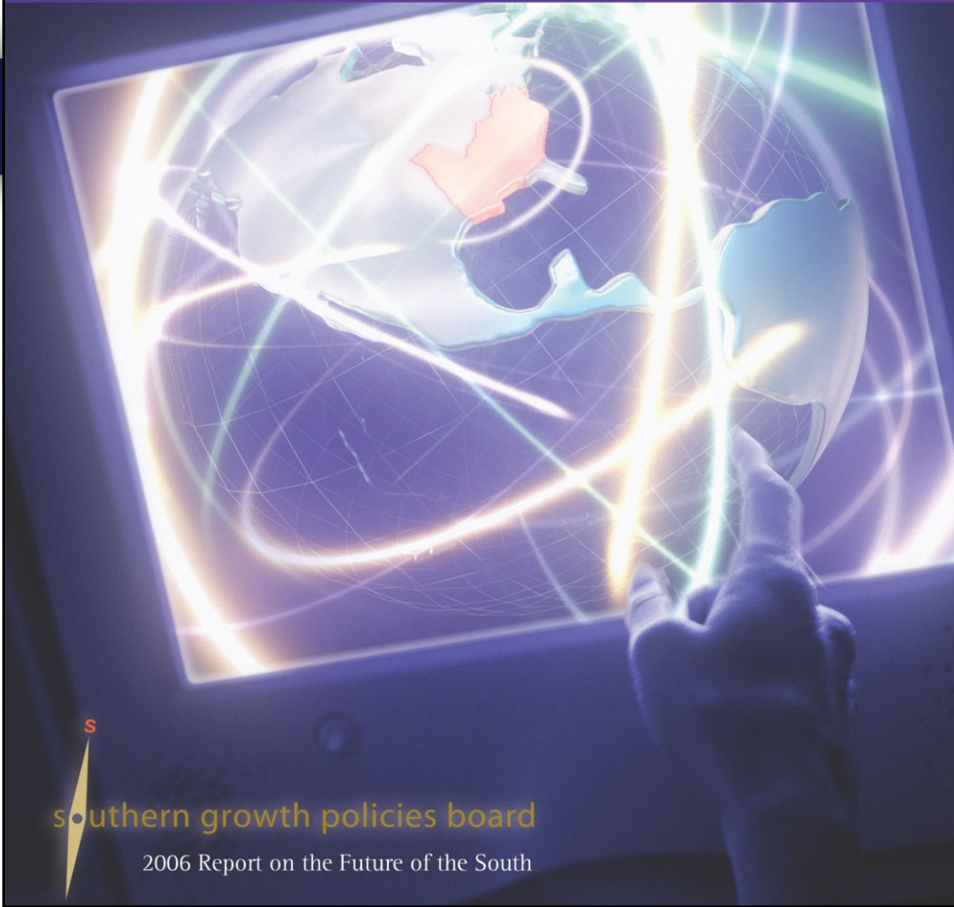
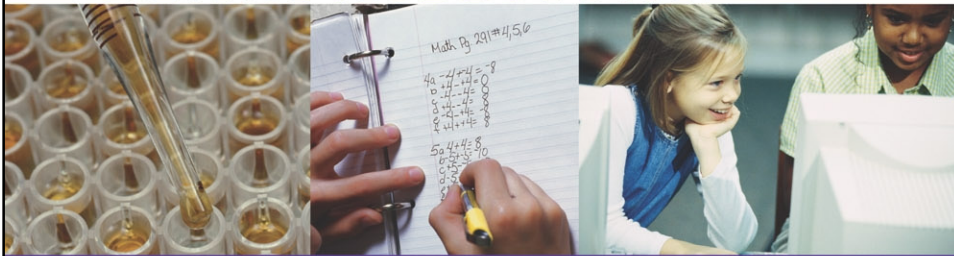


Innovation *with a* Southern Accent



 southern growth policies board

2006 Report on the Future of the South

Innovation in the South State Briefing



Pop Quiz

The South contains approximately 20 percent of the U.S. population.

The South contributes approximately 20 percent to the U.S. Gross Domestic Product.



Pop Quiz

What percent of 8th graders
in the South were proficient
in math in 2003?

22%

Source: National Science Foundation



Pop Quiz

What percent of U.S. *private* research & development was performed in the South in 2003?

9.5%

Source: National Science Foundation



Pop Quiz

What percent of U.S. *venture capital* dollars were invested in Southern companies in 2003?

9%

Source: PricewaterhouseCoopers Money Tree Survey



Pop Quiz

What percent of U.S. *high technology* employment was located in the South in 2003?

19.3%

Source: Bureau of Labor Statistics



Pop Quiz

What percent of U.S. *biotechnology* employment was located in the South in 2003?

15.1%

Source: County Business Patterns, U.S. Census



Pop Quiz

Approximately, what percent of U.S. *nanotechnology* research was performed in the South in 2005?

20%

Source: Southern Growth Policies Board



Southern Growth Policies Board

our mission

Strengthen the Southern economy

Improve quality of life



Southern Growth Policies Board

our structure

Our Board

Our Councils

Technology

Workforce

Community

Global



Innovation with a Southern Accent

why innovation?

S&E employment rose three times faster
than the annual average of
overall civilian employment.

National Science Foundation



Innovation with a Southern Accent

why innovation?

Studies estimate that technological innovation has accounted for over 50 percent of the growth in economic output since the Great Depression.

Office of Technology Assessment



Innovation with a Southern Accent

why innovation?

In 2004, 70 of the 71 technology-oriented occupations as defined by the Bureau of Labor Statistics, exceeded the median income for all workers. Over half of these occupations earned twice the median earnings for all workers.

Bureau of Labor Statistics



Innovation with a Southern Accent

A framework for thinking about
technology and innovation



Innovation with a Southern Accent

Innovation

The application of new ideas to products and processes in the pursuit of profits.

Technology

The new ideas or knowledge used in the innovation process; the primary tool for achieving innovation.



Innovation with a Southern Accent

Listening to the South



Innovation with a Southern Accent

knowledge economy

Richest Americans Before 1950:

1. John D. Rockefeller – Oil
2. Cornelius Vanderbilt – Steamboats & Railroads
3. John Jacob Astor – Fur Trade & Real Estate
4. Stephen Girard – Shipping
5. Andrew Carnegie - Steel

Richest Americans in 2006:

1. Bill Gates - Software
2. Warren Buffet - Finance
3. Sheldon Adelson – Casinos, Hotels
4. Lawrence Ellison – Software
5. Paul Allen – Software, Investments



Innovation with a Southern Accent

Knowledge Flows

Creation

Accumulation

Application



Innovation with a Southern Accent

Knowledge Flows

Creation

Creating new knowledge through basic research, inventions, art and design.



Innovation with a Southern Accent

Knowledge Flows

Accumulation

Accumulating knowledge through networks, education, and training activities.



Innovation with a Southern Accent

Knowledge Flows

Application

Applying knowledge towards new processes, markets, and businesses.



Innovation in the South

challenges

Venture Capital

Industrial R&D



Innovation in the South

opportunities

Energy

Nanotechnology

Biotechnology



Invitation: Southern Nano Network



Questions / Discussion